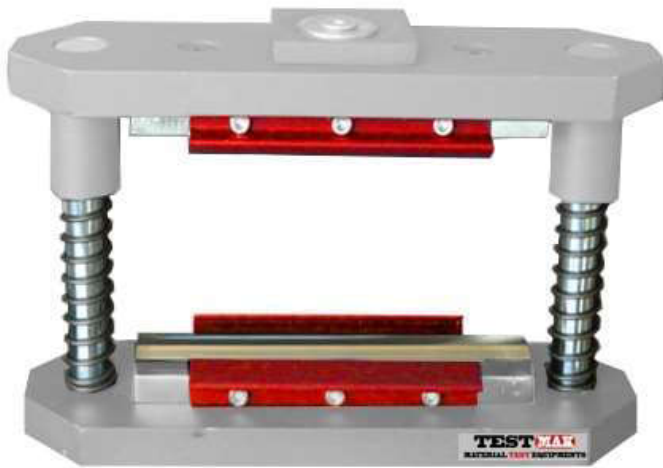


**Cube Splitting Tensile  
Apparatus**



**CONCRETE**

## Cube Splitting Tensile Apparatus



### PRODUCT MODEL

**C5252** Cube Splitting Tensile Apparatus for 100 mm and 150 mm Cube Moulds

### PRODUCT STANDARDS

**Standards** EN 12390-6, ASTM C496, BS 1881:117

### INFORMATION

<b>Manufacturer</b>	TESTMAK INS.LAB.MAK.SAN.VE TİC. PAZ. İTH. İHR. LTD. STİ
<b>Country of Origin</b>	TURKEY
<b>Product Name</b>	Cube Splitting Tensile Apparatus

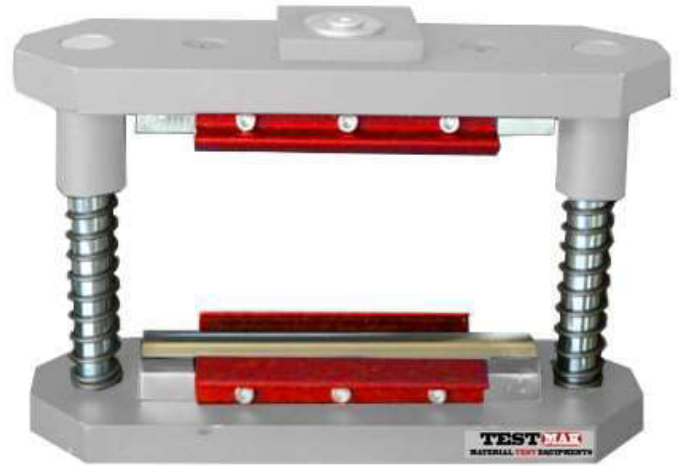
## Cube Splitting Tensile Apparatus

### DESCRIPTION

The Cube Splitting Tensile Apparatus is used for splitting for road tiles and cubes with dimensions up to 100 and 150 mm. It is fixed directly on pressure plates.

### TECHNICAL SPECIFICATIONS

Dimensions	350x250x264 mm
Weight	16 kg





**TM TEST MAK**  
**MATERIAL TEST EQUIPMENTS**

Telephone : +90 312 395 36 42  
Fax : +90 312 395 36 01

Website : [www.testmak.com](http://www.testmak.com)  
E-Mail : [info@testmak.com](mailto:info@testmak.com)

Koca Sinan Industrial Sites 1183 Street No:  
40 06370 OSTIM / ANKARA / TURKEY